

240 MECHANIC STREET, SUITE 100
 LEBANON, NEW HAMPSHIRE 03766
 (603) 448-2200 • FAX: (603) 448-1221

PATHWAYS CONSULTING, LLC
 PLANNING ENGINEERING SURVEYING CONSTRUCTION ASSISTANCE

SITE PLAN FOR DARTMOUTH COLLEGE - OAK HILL IMPROVEMENTS

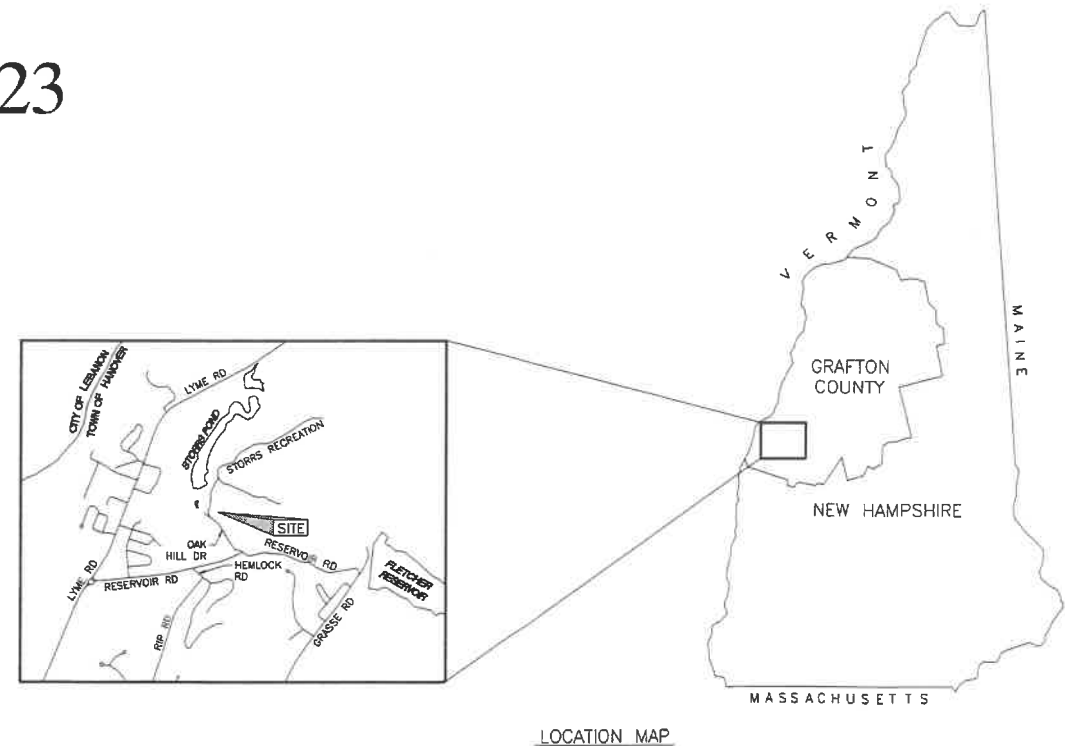
OAK HILL DRIVE
 HANOVER, NEW HAMPSHIRE

OCTOBER 2, 2023

INDEX OF SHEETS	
SHEET NO.	SHEET NAME
	COVER, INDEX OF SHEETS & LOCATION PLAN
1 OF 10	GENERAL NOTES AND TAX MAP/ABUTTERS MAP
2 OF 10	OVERALL SITE PLAN
3 OF 10	EXISTING CONDITIONS/DEMOLITION PLAN
4 OF 10	SITE LAYOUT PLAN
5 OF 10	SITE GRADING, DRAINAGE PLAN, & EROSION CONTROL PLAN
6 OF 10	LANDSCAPE & LIGHTING PLAN
7 OF 10	DRAINAGE DETAILS
8 OF 10	SITE, LANDSCAPE, AND LIGHTING DETAILS
9 OF 10	EROSION & SEDIMENT CONTROL DETAILS (1 OF 2)
10 OF 10	EROSION & SEDIMENT CONTROL DETAILS (2 OF 2)



FOR PERMITTING ONLY
 NOT FOR CONSTRUCTION



LOCATION MAP

CIVIL ENGINEER:

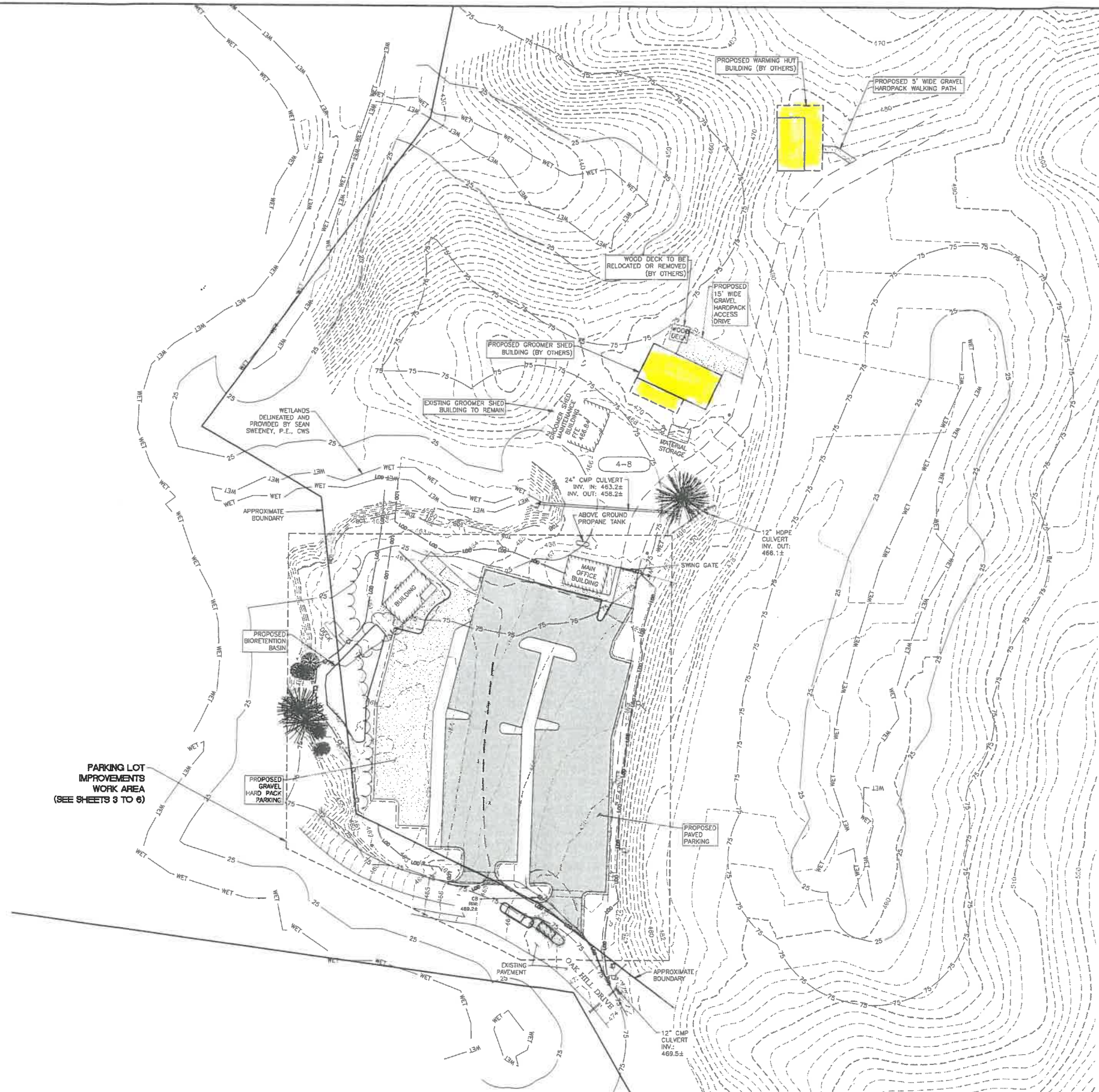
PATHWAYS CONSULTING, LLC

240 MECHANIC STREET, SUITE 100 LEBANON, NEW HAMPSHIRE
 03766 (603) 448-2200

RECORD OWNER/APPLICANT:

DARTMOUTH COLLEGE TRUSTEES

C/O DARTMOUTH REAL ESTATE OFFICE
 PO BOX 5188 HANOVER, NEW HAMPSHIRE 03755



- LEGEND - EXISTING:**
- CONTOUR
 - FENCE-SPLIT RAIL
 - EDGE GRAVEL
 - UTILITY POLE
 - GUY WIRE
 - ELECTRICAL METER
 - CATCH BASIN
 - POST
 - EDGE WOODS
 - APPROXIMATE BOUNDARY
 - HARDWOOD TREE
 - SOFTWOOD TREE
 - TEST PIT
 - TAX MAP-LOT NUMBER
 - DELINEATED WETLAND
 - WETLAND 25' BUFFER
 - WETLAND 75' BUFFER
 - TOP OF BANK
- LEGEND - PROPOSED:**
- CONTOUR
 - SPOT GRADE
 - SLOPE
 - DRAINAGE PIPE
 - LIGHT POLE
 - SIGN
 - EASEMENT
 - HARDWOOD TREE
 - LIMITS OF DISTURBANCE
 - LIMITS OF CLEARING/DISTURBANCE
 - EROSION CONTROL SOCK
 - FILTREXX CHECK DAM
 - CENTER OF SWALE/DRIP EDGE
 - PAVED AREA
 - HARD PACK-CRAVEL AREA
 - GRASS AREA
 - PROPOSED WORK
 - PARKING SPACE COUNT

PARKING LOT IMPROVEMENTS WORK AREA (SEE SHEETS 3 TO 6)



**FOR PERMITTING ONLY
NOT FOR CONSTRUCTION**

- GENERAL SURVEY NOTES:**
- HORIZONTAL DATUM: NH STATE PLANE GRID NAD83 (SURVEY FEET) FROM GPS OBSERVATION.
 - VERTICAL DATUM: NORTH AMERICAN VERTICAL DATUM 1988 (NAV88) FROM GPS OBSERVATION.
 - UNDERGROUND UTILITIES ARE APPROXIMATE AND NOT WARRANTED TO BE EXACT OR COMPLETE AND ARE TO BE FIELD VERIFIED PRIOR TO ANY EXCAVATION OR SITE MODIFICATIONS.
 - PATHWAYS CONSULTING, LLC COLLECTED DATA FOR THIS PLAN IN MAY 2023. TOPOGRAPHY SUPPLEMENTED BEYOND PARKING LOT WORK AREA WITH LIDAR DATA OBTAINED FROM NH GRANT.



REVISION NO.	DATE	DESCRIPTION	MADE BY	CHECKED BY	APPROVED BY

**OVERALL SITE PLAN
DARTMOUTH COLLEGE -
OAK HILL IMPROVEMENTS**
OAK HILL DRIVE, HANOVER, NEW HAMPSHIRE

PATHWAYS CONSULTING, LLC
240 MECHANIC STREET, SUITE 100
LEBANON, NEW HAMPSHIRE 03766
(603) 448-2200

SCALE: AS SHOWN	2
DESIGNED BY:	
DRAWN BY: DPM	
CHECKED BY: JEN	
DATE: 10-02-23	
PROJ. NO. 12241	SHEET 2 OF 10